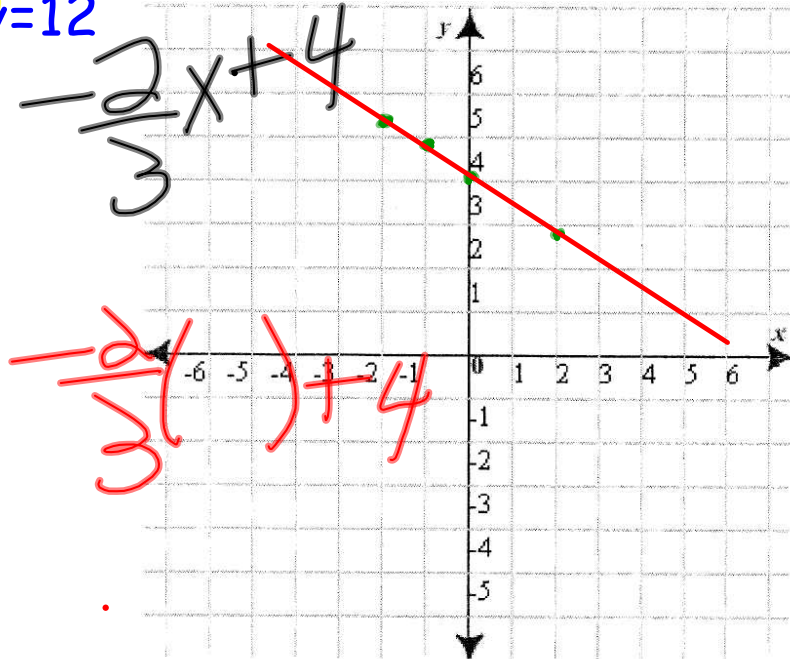


Starter $y = -\frac{2}{3}x + 4$ 08 JAN 18
 Complete the table and graph the line

given: $2x + 3y = 12$

x	y
-2	5
-1	4
0	4
2	2



$$2x + 3y = 12$$

$$y = -\frac{2}{3}x + \frac{12}{3}$$

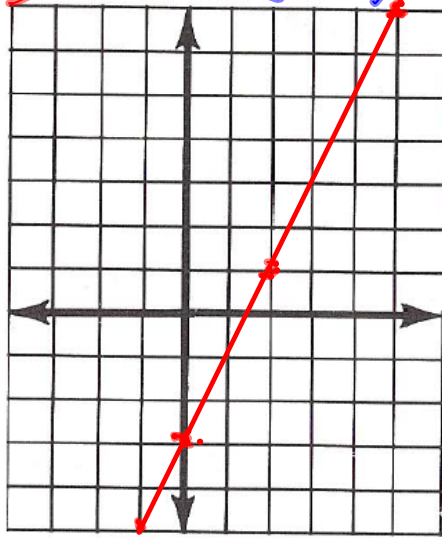
$$y = -\frac{2}{3}x + 4$$

① $y = 2x - 3$

-L R+ 4 D-

$$2(5) - 3$$

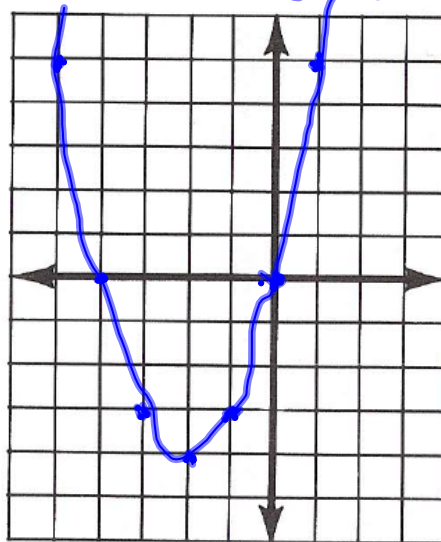
x	y
5	7
2	1
0	-3
-1	-5



③ $y = x^2 + 4x$

$$(1)^2 + 4(1)$$

x	y
1	5
0	0
-1	-3
-2	-4
-3	-3
-4	0
-5	5



parabola